



Jungle Gems™

Crystal Glaze



 **Mayco**
Jungle Gems™
Crystal Glaze

For Artists of All Ages!

Mayco's Jungle Gems™ Crystal Glazes transform in the kiln when the small pieces of glass frit burst into color and intricate patterns during the firing process. Artists use these beautiful glazes to add dramatic, colorful effects to their creations. Jungle Gems™ Crystal Glazes can be used alone or in combination with other glazes and can be fired from cone 06 to 6. Refer to the individual color label for cone 6 firing performance or visit MaycoColors.com.

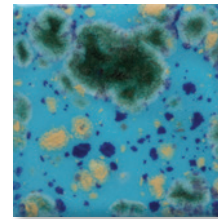
Jungle Gems™ Crystal Glazes are recommended for ornamental use only when applied to low fire earthenware clay bodies. All but eight Jungle Gems™ glazes have been certified as Non-Toxic, suitable for use by artists of all ages when used according to manufacturer's directions. Jungle Gems™ are not recommended for dinnerware produced from low fire earthenware clay bodies as these glazes can exhibit surface textures such as cracks and crevices. While the glazed surface may pass lead & cadmium leach tests, and therefore legally considered Food Safe, attempts to adequately clean the textured surface may cause the underlying porous ware to absorb water and fail. Jungle Gems™ glazes may be considered dinnerware safe if surface texture is eliminated when firing to mid-range or high fire temperatures. We invite you to unleash your creativity with Jungle Gems™ Crystal Glazes.

Available Sizes

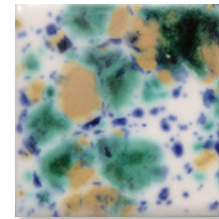
4 oz jar
16 oz pint



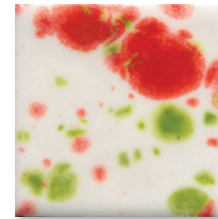
Art in a Jar™!



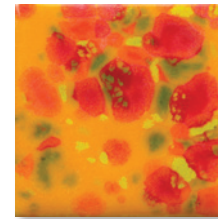
CG-718
Blue Caprice



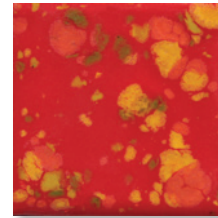
CG-722
Seawind



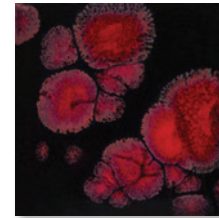
CG-750
Noel



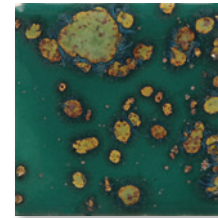
CG-753
Sassy Orange



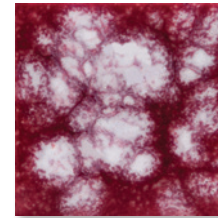
CG-756
Firecracker



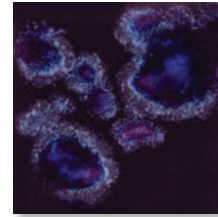
CG-779
Black Opal



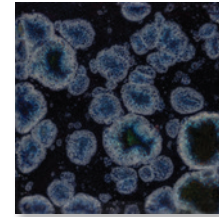
CG-780
Mystic Jade



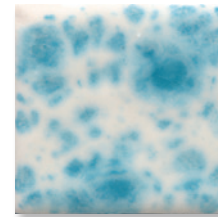
CG-783
Strawberry Sundae



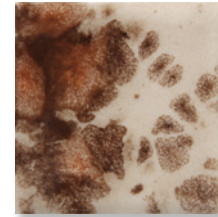
CG-785
Royal Fantasy



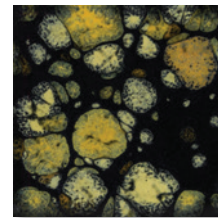
CG-786
Obsidian



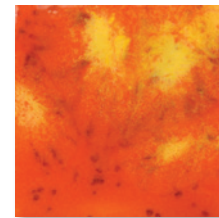
CG-788
Dutch Enamelware



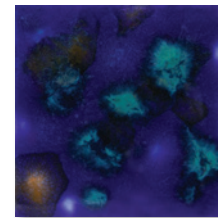
CG-795
Yadro Print



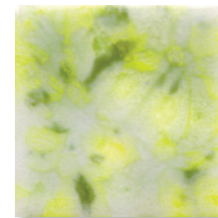
CG-798
Black Iris



CG-954
Wildfire



CG-958
Lagoon Blue



CG-963
Lemon Lime

CONE
06/05
(998°C - 1031°C)
(1828°F - 1888°F)

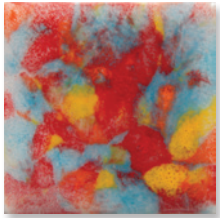


Except:
Jungle Gems
on page 6
marked CL

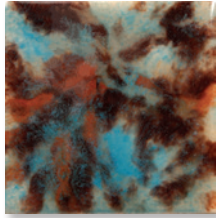


MaycoColors.com

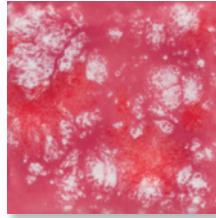




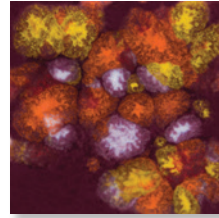
CG-964
Kaleidoscope



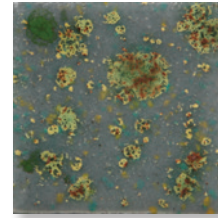
CG-965
Mocha Marble



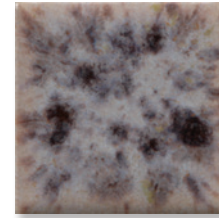
CG-968
Peppermint Twist



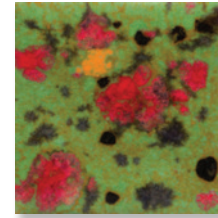
CG-969
Floral Fantasy



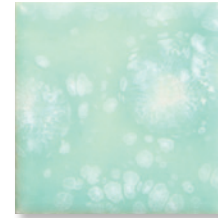
CG-991
Mountain Moss



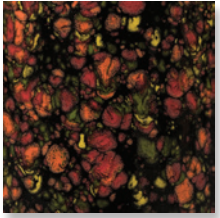
CG-993
Lavender Sprigs



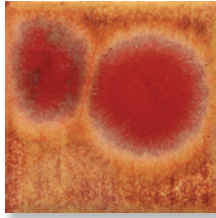
CG-994
Field & Flowers



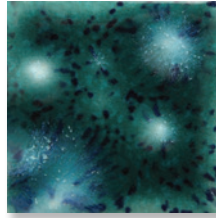
CG-997
Seafoam



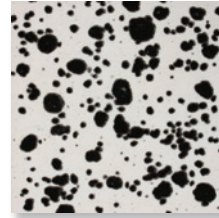
CG-970
Masquerade



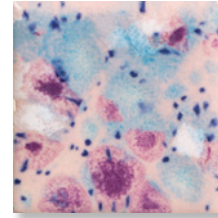
CG-972
Dragon's Breath



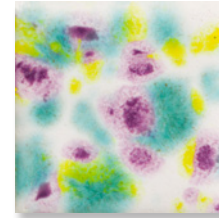
CG-974
Bloomin' Blue



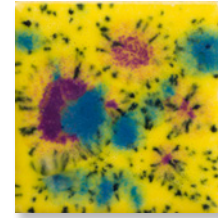
CG-977
Ink Spots



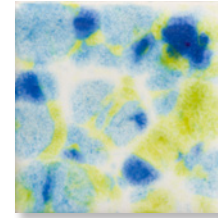
CG-998
Pink Pixie



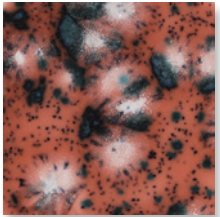
CG-999
Jazz Notes



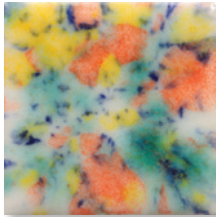
CG-1000
Mardi Gras



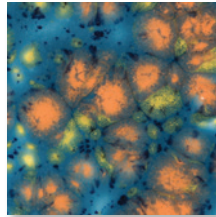
CG-1001
Gogh Iris



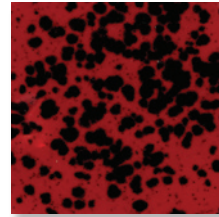
CG-980
Coral Puff



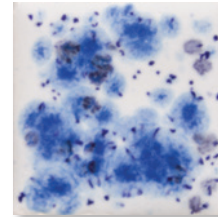
CG-981
Fruity Freckles



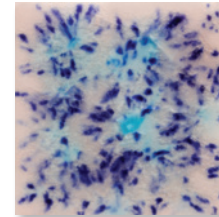
CG-983
Koi Pond



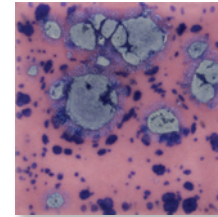
CG-984
Ladybug



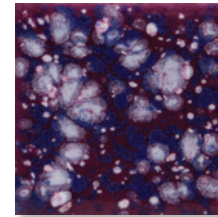
S-2701
Peacock Eyes



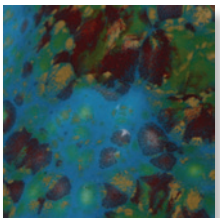
S-2702
Northern Lights



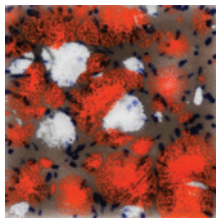
S-2703
Berryberry Pie



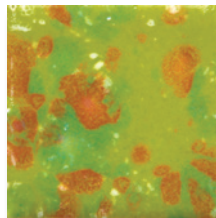
S-2704
Plum Jelly



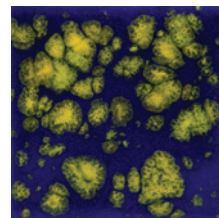
CG-985
Monet's Pond



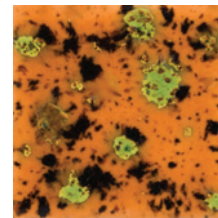
CG-986
Smoke & Fire



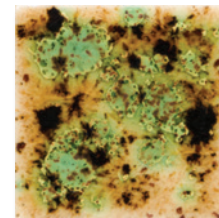
CG-987
Tree Frog



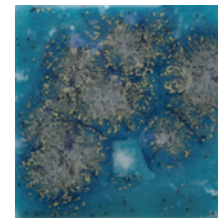
CG-990
Starry Night



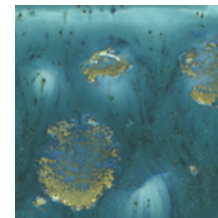
S-2708
Oriental Carmel



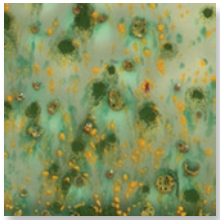
S-2709
Cappuccino Mint



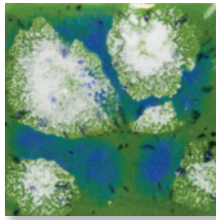
S-2711
Tahiti Grape



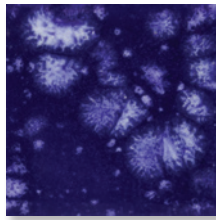
S-2712
Monsoon Seas



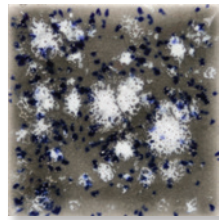
S-2714
Herb Garden



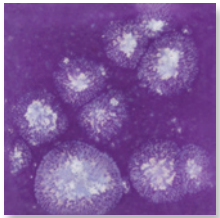
S-2715
Spotted Kiwi



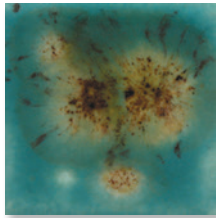
S-2716
Celestial Blue



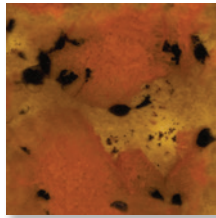
S-2718
Cosmic Black



S-2723
Grape Divine



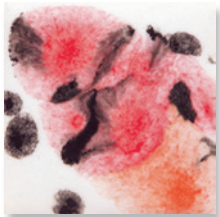
S-2724
Lotus Blossom



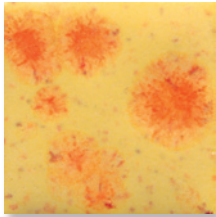
S-2725
Safari



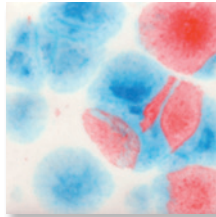
S-2726
Cheetah



S-2727
Poppy Fields



S-2729
Citrus Splash



S-2731
Kaboom

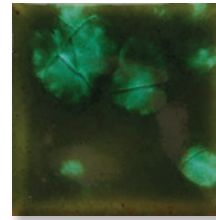


Glaze Combinations

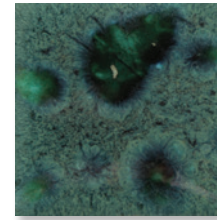
Jungle Gems™ Crystal Glazes can be used in combination with other glazes, such as Elements™, Stroke & Coat® and Foundations®.

SCAN ME!

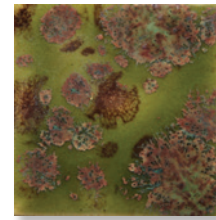
Browse our low-fire combos.



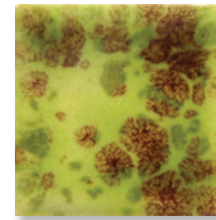
CG-707
Woodland Fantasy



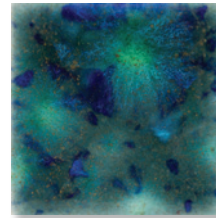
CG-713
Peacock Green



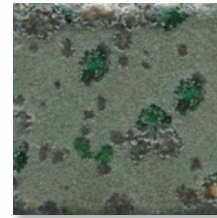
CG-716
Pagoda Green



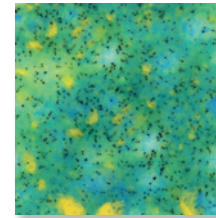
CG-717
Pistachio



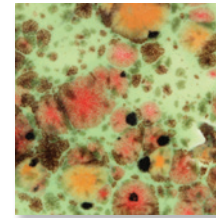
CG-962
Blue Azure



CG-973
Alligator



CG-979
Meadow



CG-982
Mixed Melon

CG-707, CG-713, CG-716, CG-717, CG-962, CG-979, and CG-982 are considered health caution due to soluble copper in the formulation. CG-973 is considered health caution due to barium in the formulation. CL products are NOT suitable for children 12 and under.



CG-964 Kaleidoscope, CG-1000 Mardi Gras, FN-018 Bright Blue, SC-11 Blue Yonder

Get inspired

For this project and other inspirational ideas, visit MaycoColors.com for our extensive Project Library.



CG-753 Sassy Orange and
CG-756 Firecracker, Cone 06

Use as a standalone or layer with another crystal glaze to create a unique effect and finish.

Jungle Gems™ demonstrate the magic of the kiln more effectively than any other glaze. Delightful for artists of all ages.



CG-753 Sassy Orange, Cone 06



FN-001 White, SC-11 Blue Yonder,
CG-753 Sassy Orange, CG-756 Firecracker,
and SG-201 Black Cobblestone, Cone 06

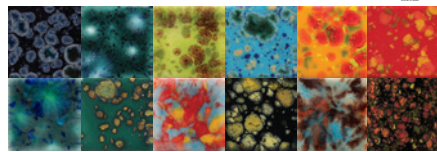


Crystal Glazes Kits

Jungle Gems™ Class Packs contain a collection of the most popular colors of our crystal-infused gloss glazes.

Jungle Gems™ Crystal Glazes Kit

CG-KIT2 Contains 12 – 4 oz jars, one each of the following colors.
CG-KT2P Contains 12 – Pints – one each of the following colors.

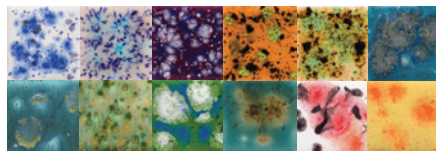


- CG-785 Royal Fantasy
- CG-974 Bloomin' Blue
- CG-717 Pistachio*
- CG-718 Blue Caprice
- CG-753 Sassy Orange
- CG-756 Firecracker
- CG-962 Blue Azure*
- CG-780 Mystic Jade
- CG-964 Kaleidoscope
- CG-798 Black Iris
- CG-965 Mocha Marble
- CG-970 Masquerade

* = CL Health Caution

Crystalites™ Kit

S2-KIT2 Contains 12 – 4 oz jars, one each of the following colors.
S2-KT2P Contains 12 – Pints, one each of the following colors.

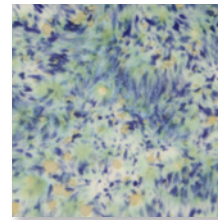


- S-2701 Peacock Eyes
- S-2702 Northern Lights
- S-2704 Plum Jelly
- S-2708 Oriental Carmel
- S-2709 Cappuccino Mint
- S-2711 Tahiti Grape
- S-2712 Monsoon Seas
- S-2714 Herb Garden
- S-2715 Spotted Kiwi
- S-2724 Lotus Blossom
- S-2727 Poppy Fields
- S-2729 Citrus Splash

Crystal glazes can be fired to higher temperatures for very interesting results.

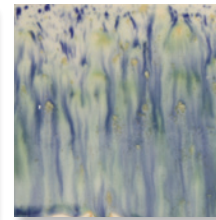
While formulated for cone 06/05 use, many of the glazes perform beautifully at higher temperatures. Refer to the individual color label for cone 6 firing performance. As Jungle Gems™ tend to flow at higher temperatures, firing your glazed ware flat or vertical can greatly impact the look, as seen on the chips below. Due to the movement of the glaze, we recommend limiting the amount of crystals on the bottom third of a vertical piece to avoid running off the ware. We recommend testing prior to use.

Fired flat
Cone 6



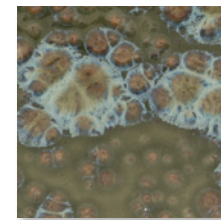
CG-722
Seawind

Fired vertically
Cone 6



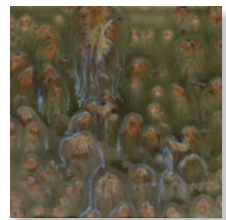
CG-722
Seawind

Fired flat
Cone 6

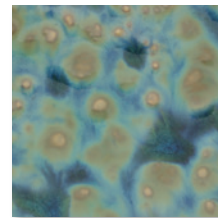


CG-780
Mystic Jade

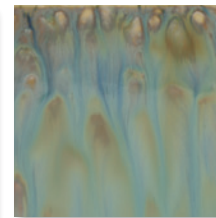
Fired vertically
Cone 6



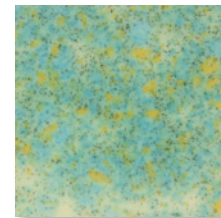
CG-780
Mystic Jade



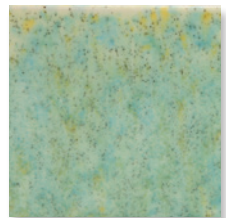
CG-962
Blue Azure



CG-962
Blue Azure



CG-979
Meadow



CG-979
Meadow

Crystal glazes can be used in combination with Mayco Fundamentals™ Underglazes, Stoneware, and Stroke & Coat® at cone 6



S-2714 Herb Garden
and UG-209 Jade



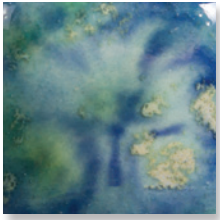
CG-977 Ink Spots,
CG-974 Bloomin' Blue,
and UG-50 Jet Black



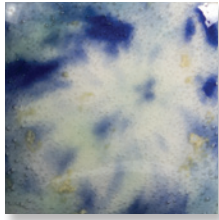
S-2708 Oriental Carmel
and UG-30 Sand

**Value priced packs available
in 4oz and pint sizes.**

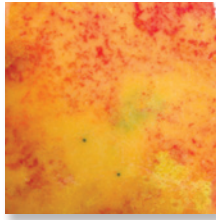
Cone 6 Results for Select Jungle Gems™ Crystal Glazes



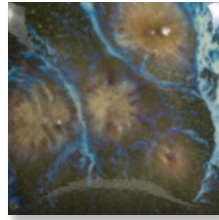
CG-718
Blue Caprice



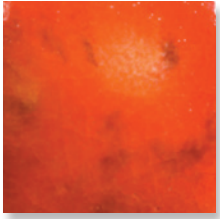
CG-722
Seawind



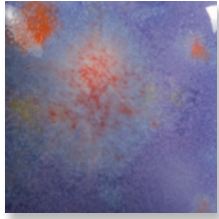
CG-753
Sassy Orange



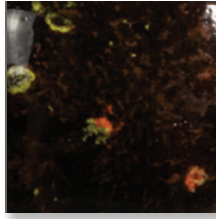
CG-780
Mystic Jade



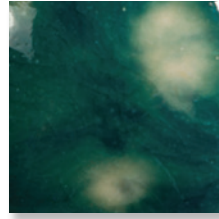
CG-954
Wildfire



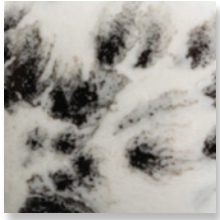
CG-969
Floral Fantasy



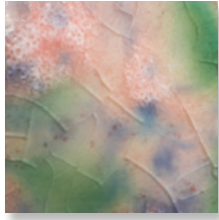
CG-970
Masquerade



CG-974
Bloomin' Blue



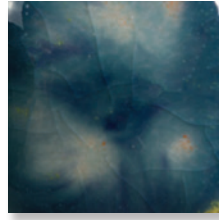
CG-977
Ink Spots



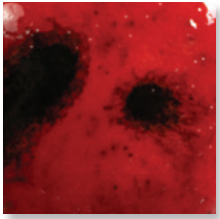
CG-980
Coral Puff



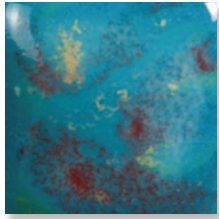
CG-981
Fruity Freckles



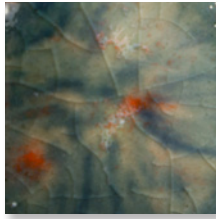
CG-983
Koi Pond



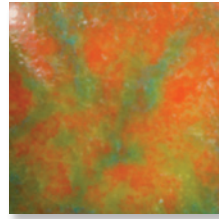
CG-984
Ladybug



CG-985
Monet's Pond

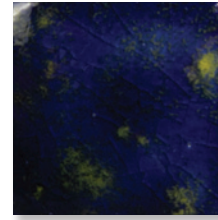


CG-986
Smoke & Fire

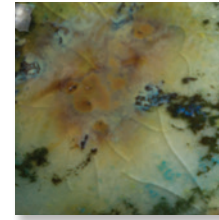


CG-987
Tree Frog

Cone 6 Results for Select Jungle Gems™ Crystal Glazes



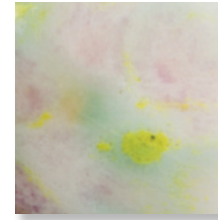
CG-990
Starry Night



CG-991
Mountain Moss



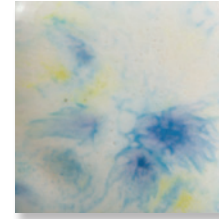
CG-998
Pink Pixie



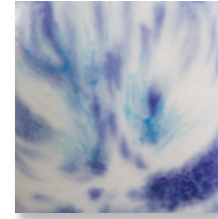
CG-999
Jazz Notes



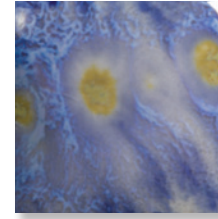
CG-1000
Mardi Gras



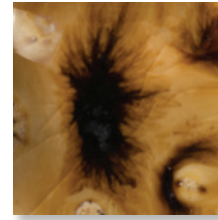
CG-1001
Gogh Iris



S-2701
Peacock Eyes



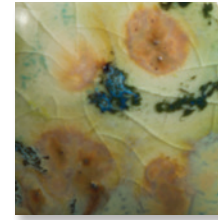
S-2703
Berryberry Pie



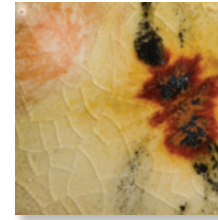
S-2708
Oriental Carmel



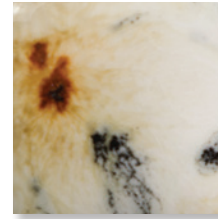
S-2709
Cappuccino Mint



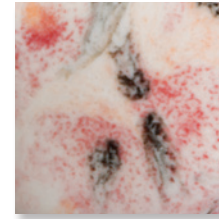
S-2714
Herb Garden



S-2725
Safari



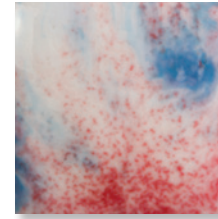
S-2726
Cheetah



S-2727
Poppy Fields



S-2729
Citrus Splash



S-2731
Kaboom

Stroke & Coat®

The Creative Choice

An intermixable, versatile glaze
perfect for the classroom or studio.



Elements™

Inspired by nature, and designed to
simulate the aesthetic movement and
interest of mid and high fire glazes.



STONEWARE

Depth, sophistication, and reliability
for artists working from mid-range
to high fire temperatures.



Expand your palette
with these glaze lines and
other products from Mayco.



MC-481E 2/23

Mayco Colors
Coloramics, LLC
4077 Weaver Court South
Hilliard, OH 43026

614-675-2020
info@maycocolors.com
MaycoColors.com

